

GROUNDING LUGS & CONNECTORS

ELECTRICAL:

See table

STANDARDS:

UL recognized file no. ZMVF2.E43665 (excludes KT375)
 Supplemental UL Certification: Grounding and bonding equipment (KDER)
 CSA certified file no. 63510-25
 Green screwhead for ID (GLxx's only)
 RoHS compliant (all)

WEBSITE RESOURCES:

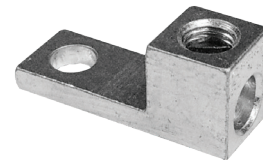
Detailed product data sheets

- Material information
- Termination & mounting specifications

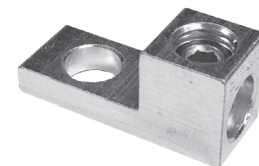
Dimensional drawings & 3D CAD files
 Accessories available

CATALOG #	WIRE RANGE AWG/kcmil	MOUNTING HOLE DIAMETER
GL02* (9807052)	#2 - #3	.27
	#4 - #6	.27
	#8	.27
	#10 - #14	.27

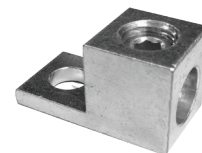
*For hex drive screw, catalog number is GL02IH



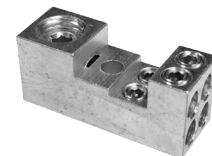
CATALOG #	WIRE RANGE AWG/kcmil	MOUNTING HOLE DIAMETER
GL20 (9818102)	2/0 - #6	.41
	#8	.41
	#10 - #14	.41



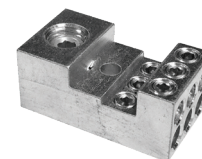
CATALOG #	WIRE RANGE AWG/kcmil	MOUNTING HOLE DIAMETER
GL35 (9819830)	350 kcmil - #6	.53



CATALOG #	WIRE RANGE AWG/kcmil	MOUNTING HOLE DIAMETER
WC12044 (9740701)	(1) 2/0 - #14	.21
	(4) #4 - #14	



CATALOG #	WIRE RANGE AWG/kcmil	MOUNTING HOLE DIAMETER
WC12064 (9797110)	(1) 2/0 - #14	.21
	(6) #4 - #14	



CATALOG #	WIRE RANGE AWG/kcmil	MOUNTING HOLE DIAMETER
KT375	1/4" Quick-connect	.13

